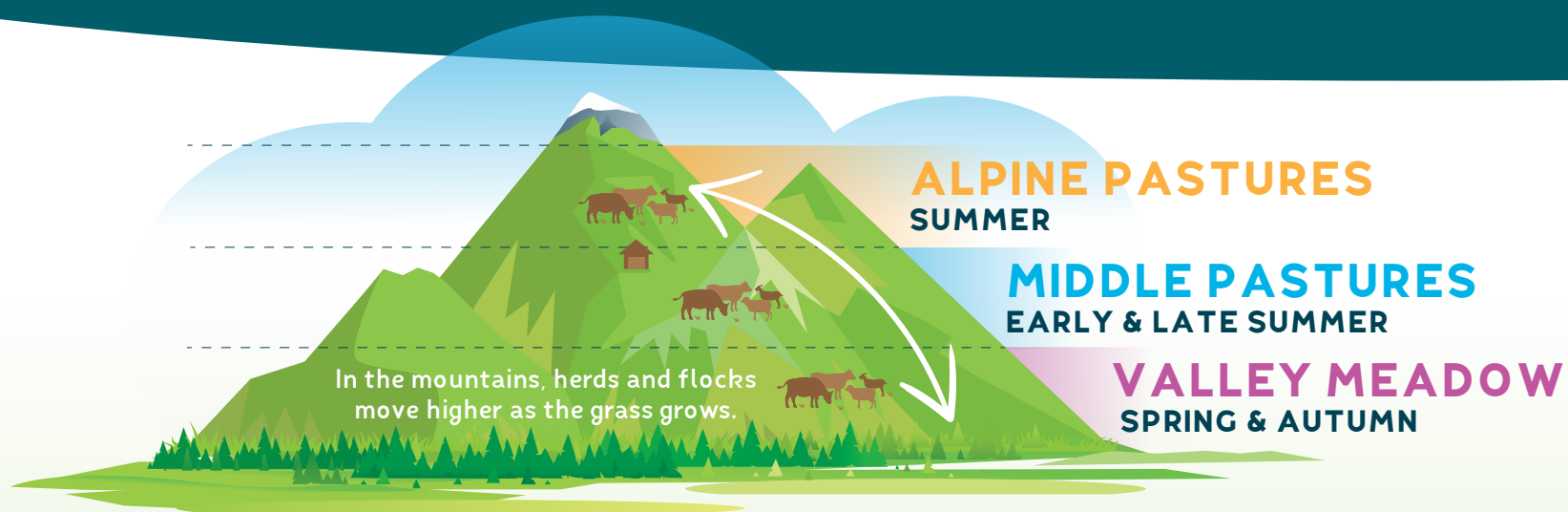


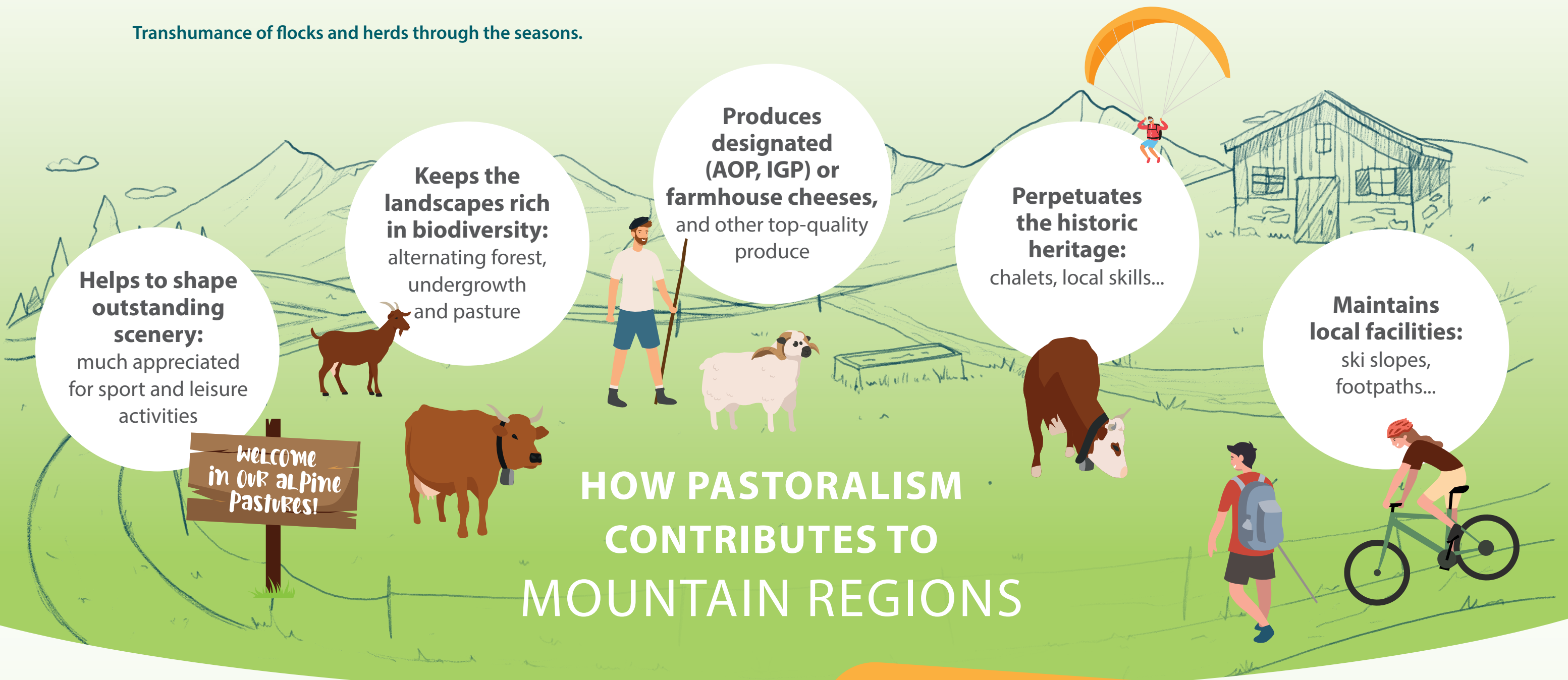
VISITING THE ALPINE PASTURES, A SHARED SPACE



Transhumance of flocks and herds through the seasons.

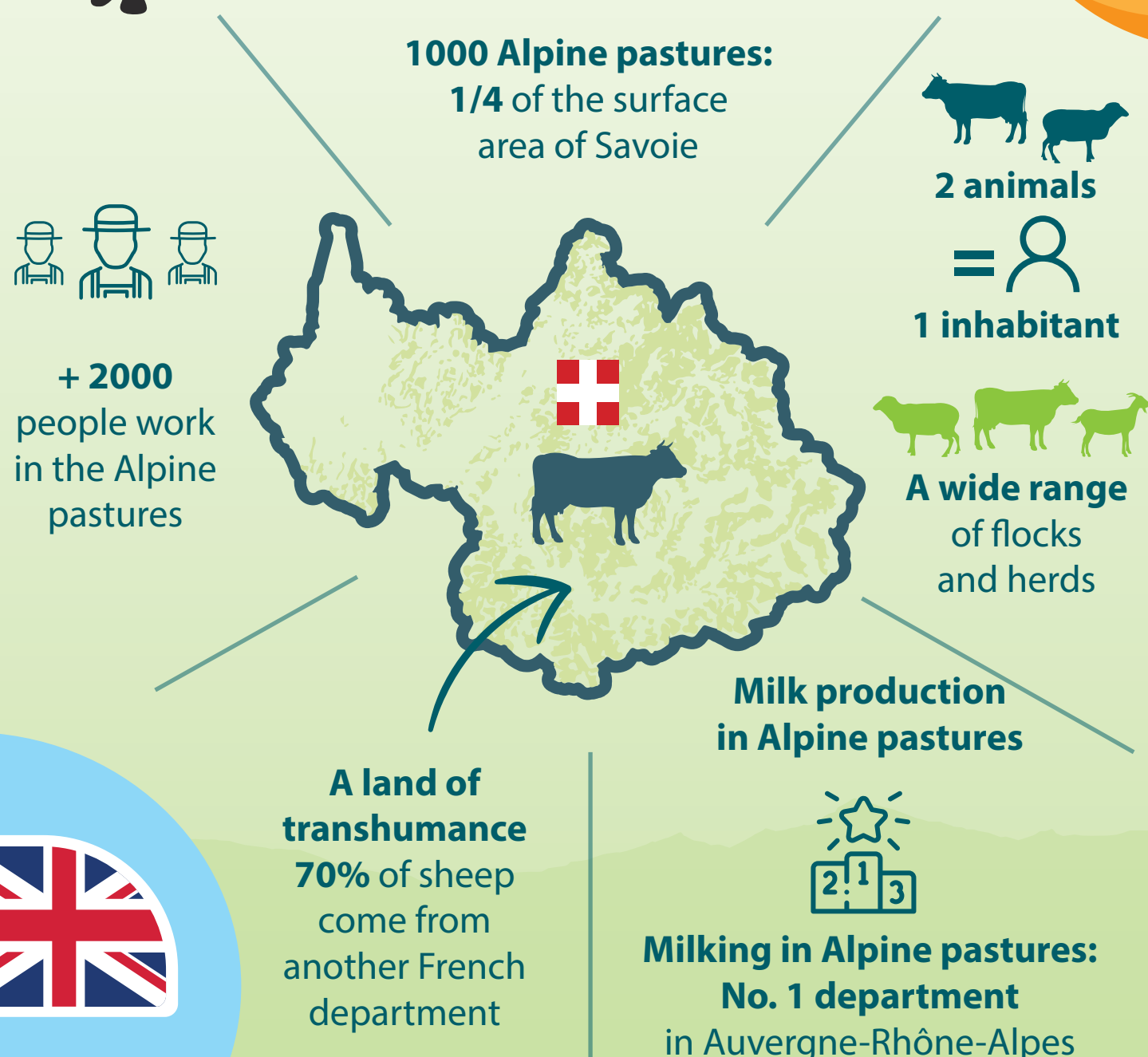
The Alpine pasture is **devoted to pastoralism**. This is an ancestral form of livestock farming based on grazing animals and the use of natural resources such as grass and water.

To **find these resources**, herds and flocks **graze in different places during the year**. This is called «transhumance».



PASTORALISM IN SAVOIE IN A FEW FIGURES*

*data from the pastoral survey 2012-2014



The sign will show you when you are entering A PASTORAL AREA

PLEASE TAKE CARE!

You will probably come across men and women at work with their flocks and herds, along with their dogs.
Welcome to their place of work.

Along the way, you will see these types of signs. To make sure that everyone can enjoy their visit to the Alpine pastures, please follow these recommendations:



STAY ON THE FOOTPATHS



WALK AROUND THE HERDS



ALWAYS CLOSE GATES BEHIND YOU